



ECOTHERM

Effective cleaning with hot water.

The hot water cleaner EcoTherm reaches performance levels, which otherwise are only achieved by bigger high-pressure units. Cleaning with hot water is often more effective than with cold water. This means that lower pressures are sufficient for comparable cleaning tasks.



ТОВ «Гідросервіс»

в.л.Рейтарська, 25 01034, Київ, Україна
 +38 (044) 235-72-03 | 270 53 01 | 235 59 02
 gidroservis2008@ukr.net
 www.gidroservice.com.ua

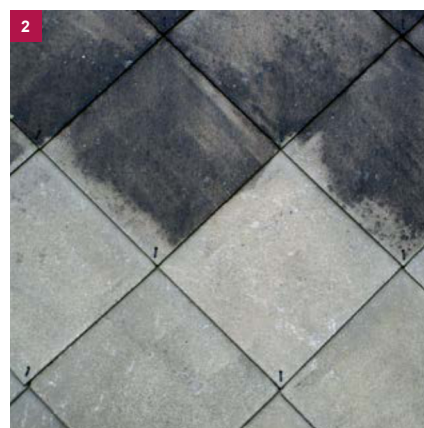
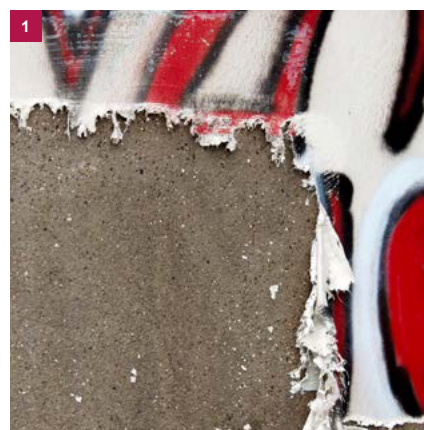
Advantages at a glance:

- The extremely reliable and durable high-pressure pump 70Y is characterised by its compact design and low weight.
- Economical and robust diesel engine (36 kW).
- The unit and the therm are operated via a common, modern and intuitive control.
(You will find detailed information on our device controllers starting on page 14.)
- The compact and weight-optimized single-axle trailer is approved as a trailer up to 80 km/h and can be brought to site with almost any middle-class car.
- With up to 95 °C façades, small pipes, industrial flooring and other surfaces can be easily cleaned, oil and grease can be washed away and coating can be removed.
- The tank system with five chambers including a safety trough prevents the leakage of fluids, such as fuel, oil or softeners.
- Automatic shutdown of the heating elements when there is no water supply increases safety and saves energy costs.
- Maximum safety for the user: The system is pressure free as long as the high-pressure gun is not activated.
- Integrated frost protection technology.

1 Graffiti and coating can be easily removed from walls and facades.

2 Soiled floors and surfaces can be cleaned by using the EcoTherm.

3 The EcoTherm works quickly and efficiently with hot water.



Technical Data EcoTherm

Unit type	ET 600	ET 800
Max. pressure bar	600	800
Max. volume flow in l/min	28	21
Max. water temperature in C°	95	
Heating oil tank in l	100	
Fuel tank in l	100	
Water tank in l	200	
Weight in kg (incl. operating material)	1,700	
Measures in mm (L x W x H)	4,100 × 1,900 × 1,960	