

Your Perfect Nozzle

The DERC nozzle range is the basis for all your water jetting projects up to 3000 bar. Our basic models simplify your choice; they can be configured to your specifications and delivered quickly. We will optimally configure and drill your nozzle per order, to suit your working conditions.

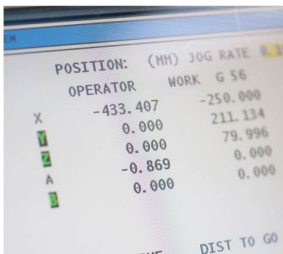
PERFECT SPRAY PATTERNS

Based on your requirements and specifications (such as pressure, pump capacity, use as pulling / pushing or neutral, connection, thread, permissible reaction force and spray pattern) we advise you on the optimal configuration. Providing you with the perfect spray pattern for the best results.

WIDE CHOICE OF CONFIGURATIONS

The DERC nozzle range is designed by our engineers, based on sustainable quality:

- + Each nozzle type, a wide choice of configurations
- + High efficiency with optimum spray pattern
- + Longer life cycle because of recessed drilled nozzle-holes and spray pattern
- + No more oxidation, due to applied materials and heat treatment
- + Short delivery time
- + Excellent value for money



O.E.M. Nozzles

The DERC nozzle range is the solution for all your high pressure cleaning needs. Each nozzle is configured to order and drilled in our factory, completely tailored to your working conditions and needs. The engineered designs improve your cleaning results, make your work easier and more effective with recessed drilled nozzle holes. The used material guarantees a longer life cycle.



DERC SALOTECH – ORIGINAL EQUIPMENT MANUFACTURER AND SUPPLIER OF INNOVATIVE HIGH PRESSURE WATER JETTING SOLUTIONS, AUTOMATED EQUIPMENT AND ACCESSORIES. WE PROVIDE STATE OF THE ART KNOWLEDGE AND SERVICES.



DERC Nozzles

- + LONG LIFE CYCLE, HIGHLY EFFECTIVE
- + MANY CONFIGURATIONS AVAILABLE
- + EXCELLENT VALUE FOR MONEY
- + MAX. WORKING PRESSURE 3000 BAR

MADE BY
DERC



DUT-NOZZLE

DERC Universal Type, universal nozzles for (flex) lances and ridged lances.

- + Available sizes: M7, 1/8" BSP, 1/4" BSP and 3/8" BSP
- + Max. working pressure 1500 bar, various configurations



DTLT-NOZZLE

DERC Tower Lance Type, the UHP nozzle for flex and ridged lances.

- + Available sizes: 1/4" UNF, 3/8" UNF, 9/16" UNF and M14x1,5
- + Max. working pressure 3000 bar, various configurations



DPLT-NOZZLE

DERC Power Lance Type, the model nozzle for ridged lances.

- + Available sizes: 1/4" UNF and 5/16"
- + Max. working pressure 1500 bar, various configurations



DUHP-NOZZLE

DERC Ultra High Pressure Nozzle, the nozzle for tube cleaning with ridged lances.

- + Available sizes: M7 and M10
- + Max. working pressure 3000 bar, various configurations



NOZZLE DRIVERS

DERC Nozzle Driver Type, the thrust nozzle to give you the extra push.

- + Available sizes: M7, 1/8" BSP, 1/4" BSP, M22, M24 and M36
- + Max. working pressure 1500 bar



18XX SERIES

The DERC 18xx type nozzles are the standard for bigger diameter hoses.

- + Used for general pipe line cleaning and unplugging
- + Available sizes: M18, M22, M24, 3/8" BSP and 1/2" BSP
- + Max. working pressure 1500 bar



DST-NOZZLE

DERC Short Type, short model nozzle for flex lancing around small radius bends.

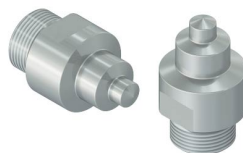
- + Available sizes: M7, 1/8" BSP and 1/4" BSP
- + Max. working pressure 1500 bar, various connections



DPT-NOZZLE

DERC Pyramid Type, the pyramid nozzle for flex lancing and removal of hard plugs.

- + Available sizes: M7, 1/8" BSP and 1/4" BSP
- + Max. working pressure 1500 bar, various connections



RN-NOZZLE

DERC Rotocar nozzle is specially designed for cleaning with the rotocar pipe cleaning system. Removal of hard plugs and lines with hard scale are the jobs for this nozzle.

- + Available with M24 connection and various connections
- + Max. working pressure 1500 bar



DCN-NOZZLE

DERC Cross Type, the nozzle for removal of hard plugs with flex or ridged lances.

- + Unique with 2 jets cross jetting to the front
- + Available sizes: M7, 1/8" BSP, 1/4" BSP, 3/8" UNF, 9/16" UNF and M14x1,5
- + Max. working pressure 3000 bar



DP-NOZZLE

DERC Penetrator type, Point shape model for flex and ridged lances.

- + Available sizes: 1/16" NPT, 1/8" NPT and 1/4" NPT
- + Max. working pressure 1000 bar, various configurations



DTLX-NOZZLE

DERC TLX model is designed for flex and ridged lancing. Universal model with UNF threading.

- + Available sizes: 1/4" UNF, 3/8" UNF and 9/16" UNF
- + Max. working pressure 1500 bar, various configurations