



SPC-UH 78UHM-R6

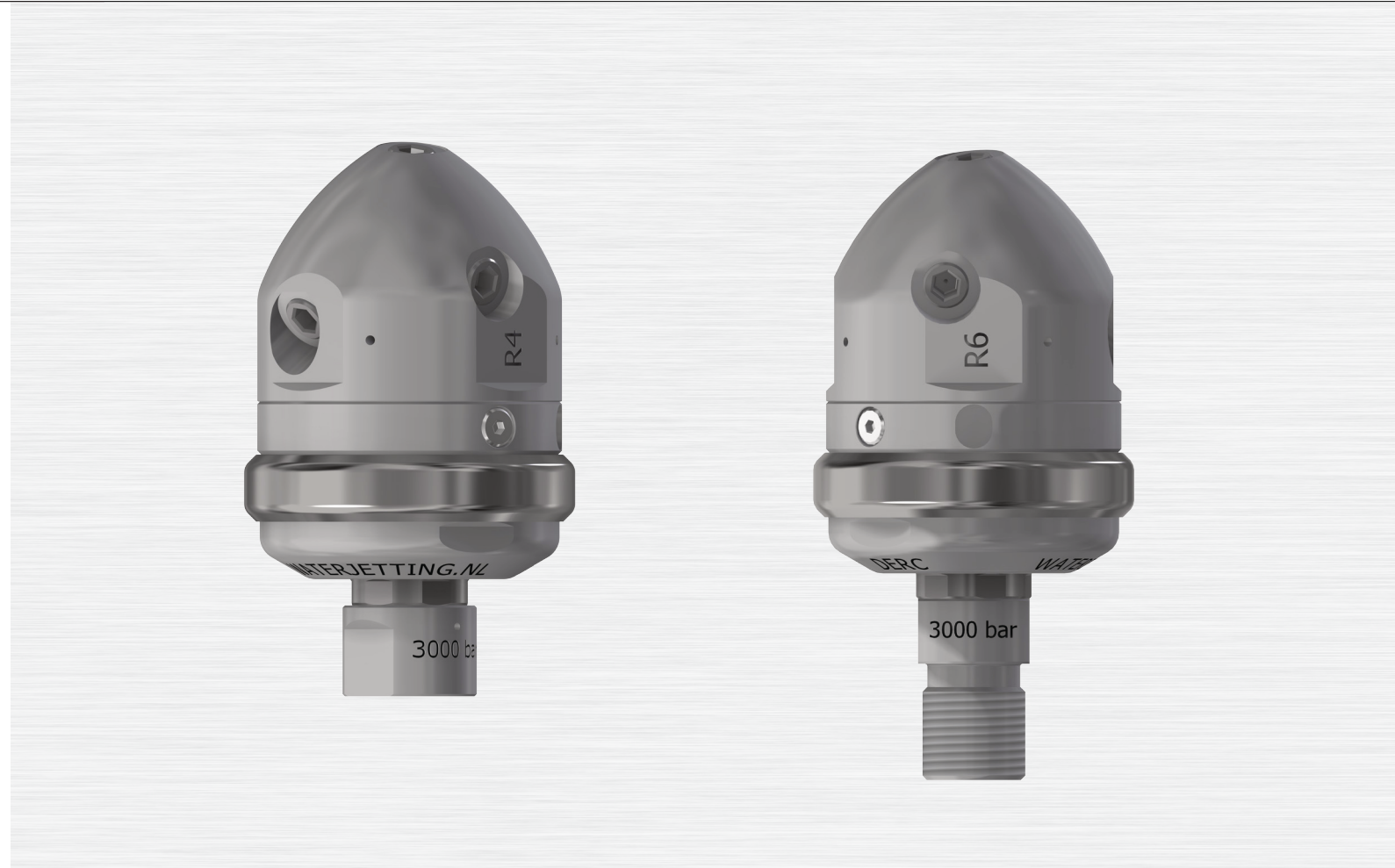


SPC-UH 78UHM-R6

7/8" UNF M

	SPC-UH-78UHM-R4	SPC-UH-78UHM-R6	SPC-UH-78UHM-R8.5
Max. pressure	3000 bar	3000 bar	3000 bar
Pressure 2500 bar	35-55 l/min	25-35 l/min	17-25 l/min
Pressure 2800 bar	35-50 l/min	25-35 l/min	17-25 l/min
Pressure 3000 bar	35-50 l/min	25-35 l/min	17-25 l/min
Inlet connection	7/8" UNF M	7/8" UNF M	7/8" UNF M
Rotation speed*	100-500 PM	100-500 PM	100-500 PM
Inserts	5 x 965.xxx	5 x 965.xxx	5 x 965.xxx
Length	128 mm	128 mm	128 mm
Diameter	70 mm	70 mm	70 mm
Weight	1,75 kg	1,75 kg	1,75 kg
Max. temp. med.*	80°C	80°C	80°C

\* Adjustable speed



## DERC Speed Regulated Pipe Cleaner - SPCUH

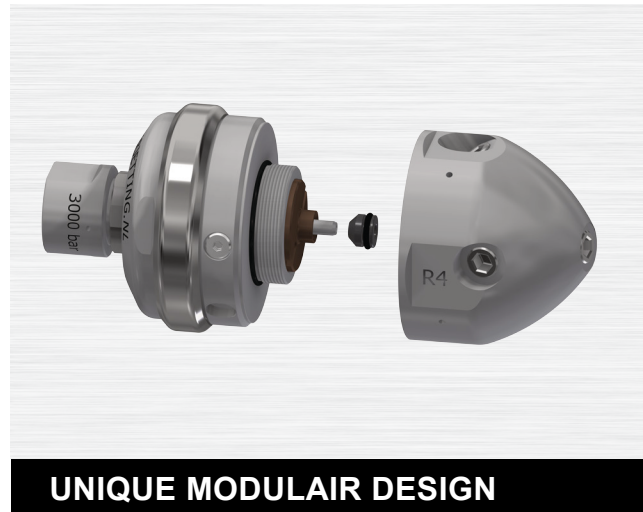
- + SHORT AND ROBUST DESIGN
- + ADJUSTABLE ROTATION SPEED BY AN ADJUSTING NUT
- + UNIQUE VERSATILE TOOL DUE TO MODULAR DESIGN\*
- + LONG LIFE OF HIGH PRESSURE SEALS

**MADE BY  
DERC**

DERC SALOTECH - ORIGINAL EQUIPMENT MANUFACTURER AND SUPPLIER OF INNOVATIVE HIGH PRESSURE WATER JETTING SOLUTIONS, AUTOMATED EQUIPMENT AND ACCESSORIES. WE PROVIDE STATE OF THE ART KNOWLEDGE AND SERVICES.

# DERC Speed Regulated Pipe Cleaner - SPCUH

DERC Salotech has developed the DERC Speed Regulated Pipe Cleaner (SPC) for ultra-high pressure cleaning with bended pipes. The SPC nozzles are water driven and suitable for a working pressure up to 3000 Bar. The SPC's have an easy adjustable rotation speed and are provided with a hardened protection ring.



### Features:

- + Heavy duty stainless steel construction
- + Short and robust design
- + Adjustable rotation speed by an adjusting nut
- + Unique versatile tool due to modular design\*
- + Low maintenance
- + Long life of high pressure seals

### UNIQUE MODULAR DESIGN

The SPC-UH is designed in a way that the high pressure swivel with the adjustable break and the nozzle head are modular, in two parts. The design enables SPC-UH swivel assemblies with different nozzle heads (R size) to suit your high pressure pump capacity.

The rotation speed can easily be adjusted by hand (spanner) to adjust the SPC tool for each application. The SPC is designed and constructed for waterblast cleaning of pipes as small as 4" with elbows.

The DERC SPC comes with special tooling for easy and safe maintenance. The DERC SPC Centralizer makes it possible to centre the DERC SPC, thus protecting the rotating nozzle and achieving the best cleaning result.

The DERC SPC-UH is available with 3/4" UNF F (3/8" HP, H6) and 7/8" UNF M connection. For both these types we offer thermoplastic leader hoses of SpirStar to keep the complete assembly as short as possible.

The DERC SPC-UH is available with 3/4" UNF F (3/8" HP, H6) and 7/8" UNF M connection. For both these types we offer thermoplastic leader hoses of SpirStar to keep the complete assembly as short as possible.



3/4" UNF F			
	SPC-UH-H6-R4	SPC-UH-H6F-R6	SPC-UH-H6F-R8.5
Max. pressure	3000 bar	3000 bar	3000 bar
Pressure 2500 bar	35-55 l/min	25-35 l/min	17-25 l/min
Pressure 2800 bar	35-50 l/min	25-35 l/min	17-25 l/min
Pressure 3000 bar	35-50 l/min	25-35 l/min	17-25 l/min
Inlet connection	3/4" UNF F	3/4" UNF F	3/4" UNF F
Rotation speed*	100-500 PM	100-500 RPM	100-500 PM
Inserts	5 x 965.xxx	5 x 965.xxx	5 x 965.xxx
Length	114 mm	114 mm	114 mm
Diameter	70 mm	70 mm	70 mm
Weight	1,65 kg	1,65 kg	1,65 kg
Max. temp. med.	80°C	80°C	80°C
* Adjustable speed			