



# ECOTHERM

## Effective cleaning with hot water.

The hot water cleaner EcoTherm reaches performance levels, which otherwise are only achieved by bigger high-pressure units. Cleaning with hot water is often more effective than with cold water. This means that lower pressures are sufficient for comparable cleaning tasks.



### ООО «Гидросервис»

ул.Рейтарская, 25 01034, Киев, Украина  
 +38 (044) 235-72-03 | 270 53 01 | 235 59 02  
 gidroservis2008@ukr.net  
 www.gidroservice.com.ua

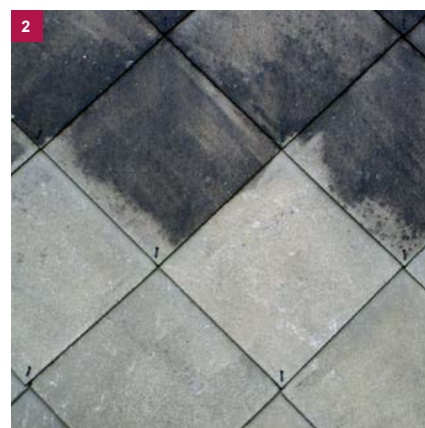
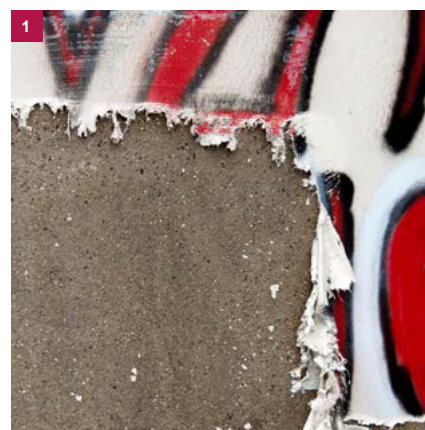
### Advantages at a glance:

- The extremely reliable and durable high-pressure pump 70Y is characterised by its compact design and low weight.
- Economical and robust diesel engine (36 kW).
- The unit and the therm are operated via a common, modern and intuitive control.  
(You will find detailed information on our device controllers starting on page 14.)
- The compact and weight-optimized single-axle trailer is approved as a trailer up to 80 km/h and can be brought to site with almost any middle-class car.
- With up to 95 °C façades, small pipes, industrial flooring and other surfaces can be easily cleaned, oil and grease can be washed away and coating can be removed.
- The tank system with five chambers including a safety trough prevents the leakage of fluids, such as fuel, oil or softeners.
- Automatic shutdown of the heating elements when there is no water supply increases safety and saves energy costs.
- Maximum safety for the user: The system is pressure free as long as the high-pressure gun is not activated.
- Integrated frost protection technology.

**1** Graffiti and coating can be easily removed from walls and facades.

**2** Soiled floors and surfaces can be cleaned by using the EcoTherm.

**3** The EcoTherm works quickly and efficiently with hot water.



### Technical Data EcoTherm

Unit type	ET 600	ET 800
Max. pressure bar	600	800
Max. volume flow in l/min	28	21
Max. water temperature in C°	95	
Heating oil tank in l	100	
Fuel tank in l	100	
Water tank in l	200	
Weight in kg (incl. operating material)	1,700	
Measures in mm (L x W x H)	4,100 × 1,900 × 1,960	